

Access to geographic data to enhance the ICRC's humanitarian response and reporting



ICRC

Yann Rebois/Friederieke Alschner

yrebois@icrc.org

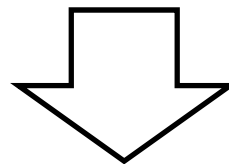
GISupport@icrc.org

150 years of humanitarian action

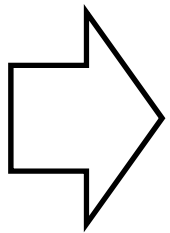
The **ICRC** strives to assist and protect the victims of armed conflict and internal violence.

Context and Needs

- 80 contexts or countries with key operations like Afghanistan, DRC, Colombia, Ukraine,...
- 10 majors sectors of intervention (Detention, Protecting civilians, Health, Food Security, Water and Habitat..)

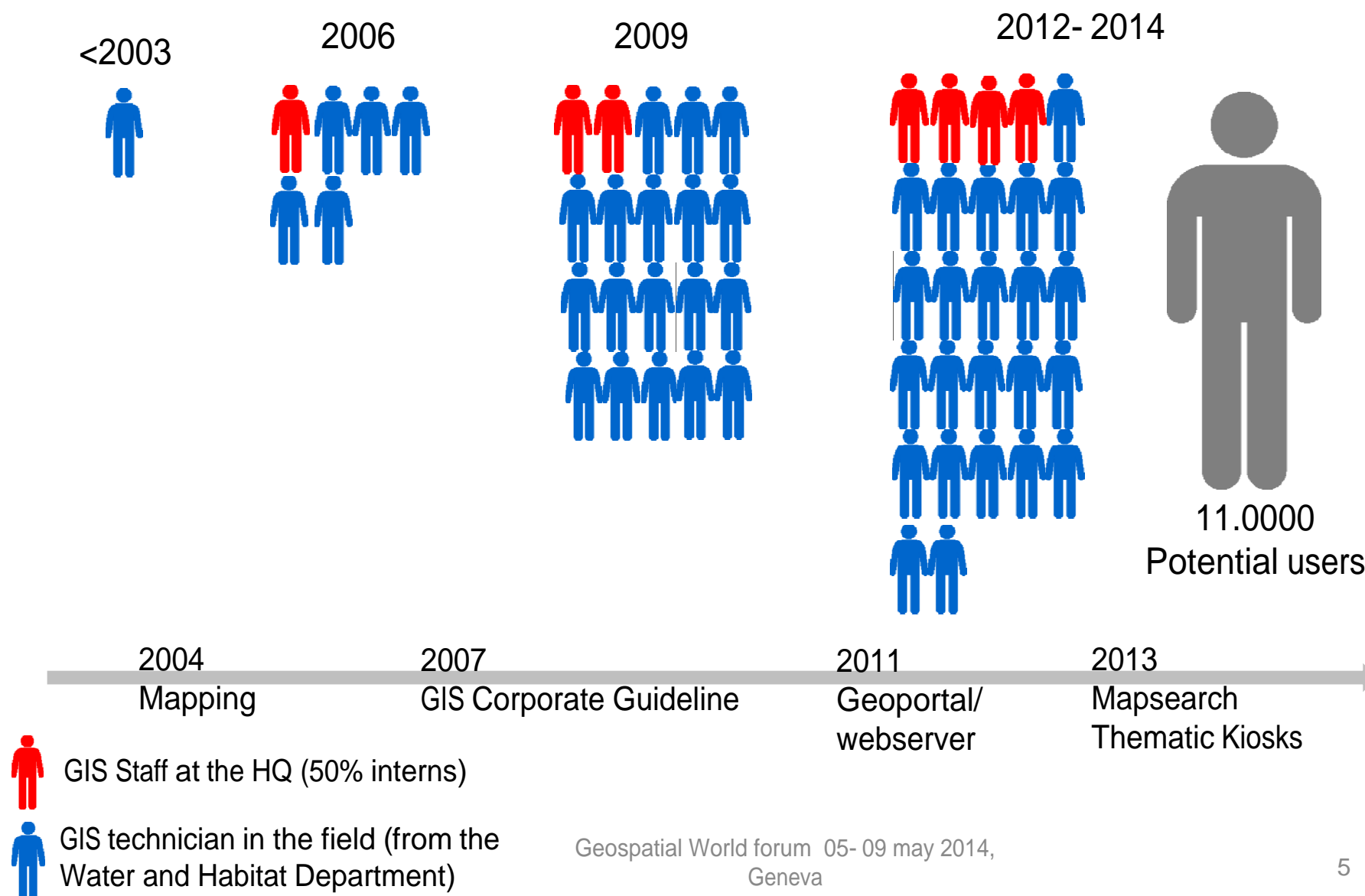


- Institutional dataset for consultations + sudden-onset emergencies
- Tool responding to the needs in different humanitarian responses and for different user groups (thematic, sector, countries, confidentiality,..)



To improve the ICRC's response to people's needs in its various humanitarian operations, the ICRC is increasingly turning to geographic information systems (GIS).

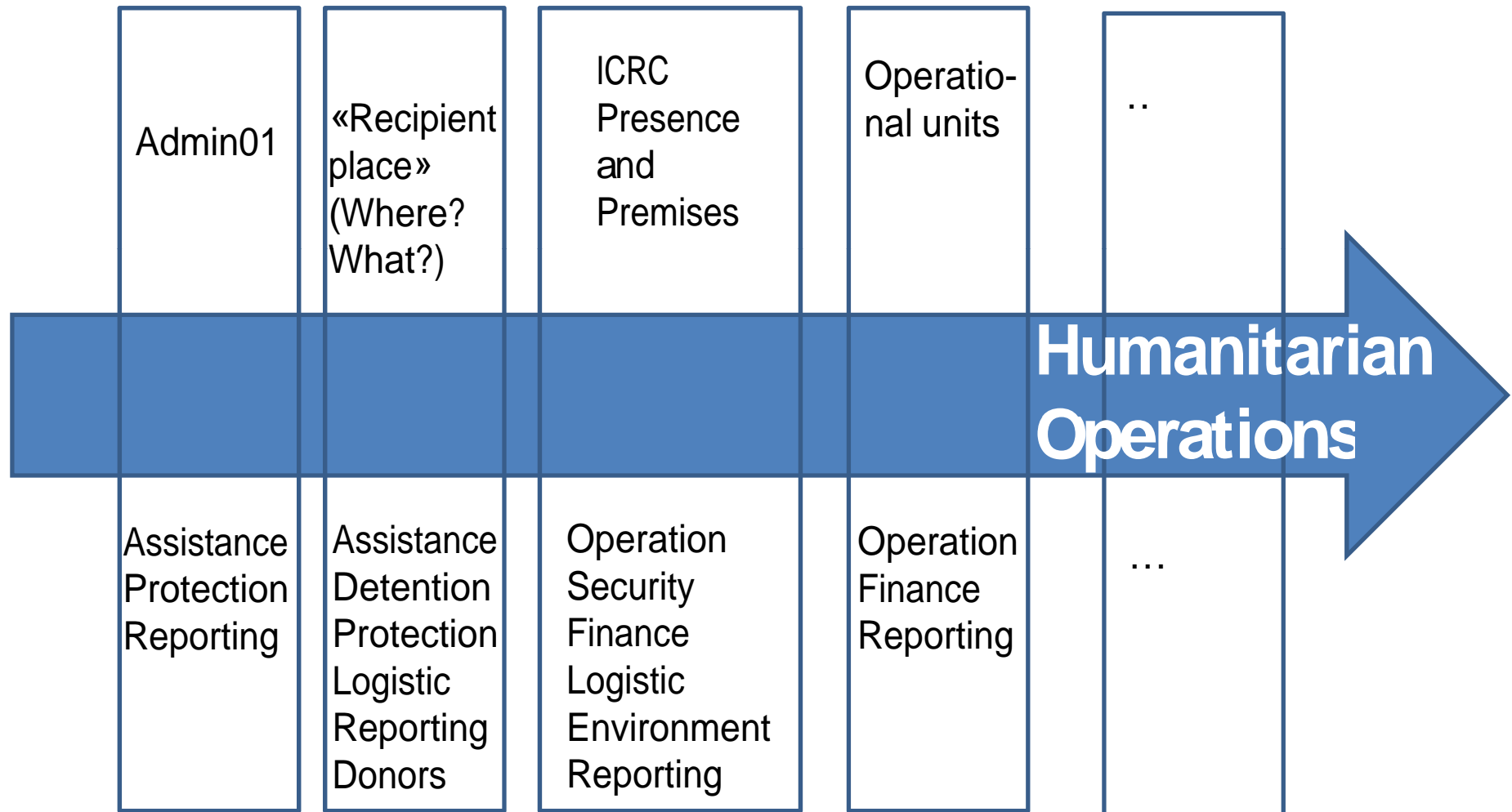
GIS Human resources: delivering geolocation information



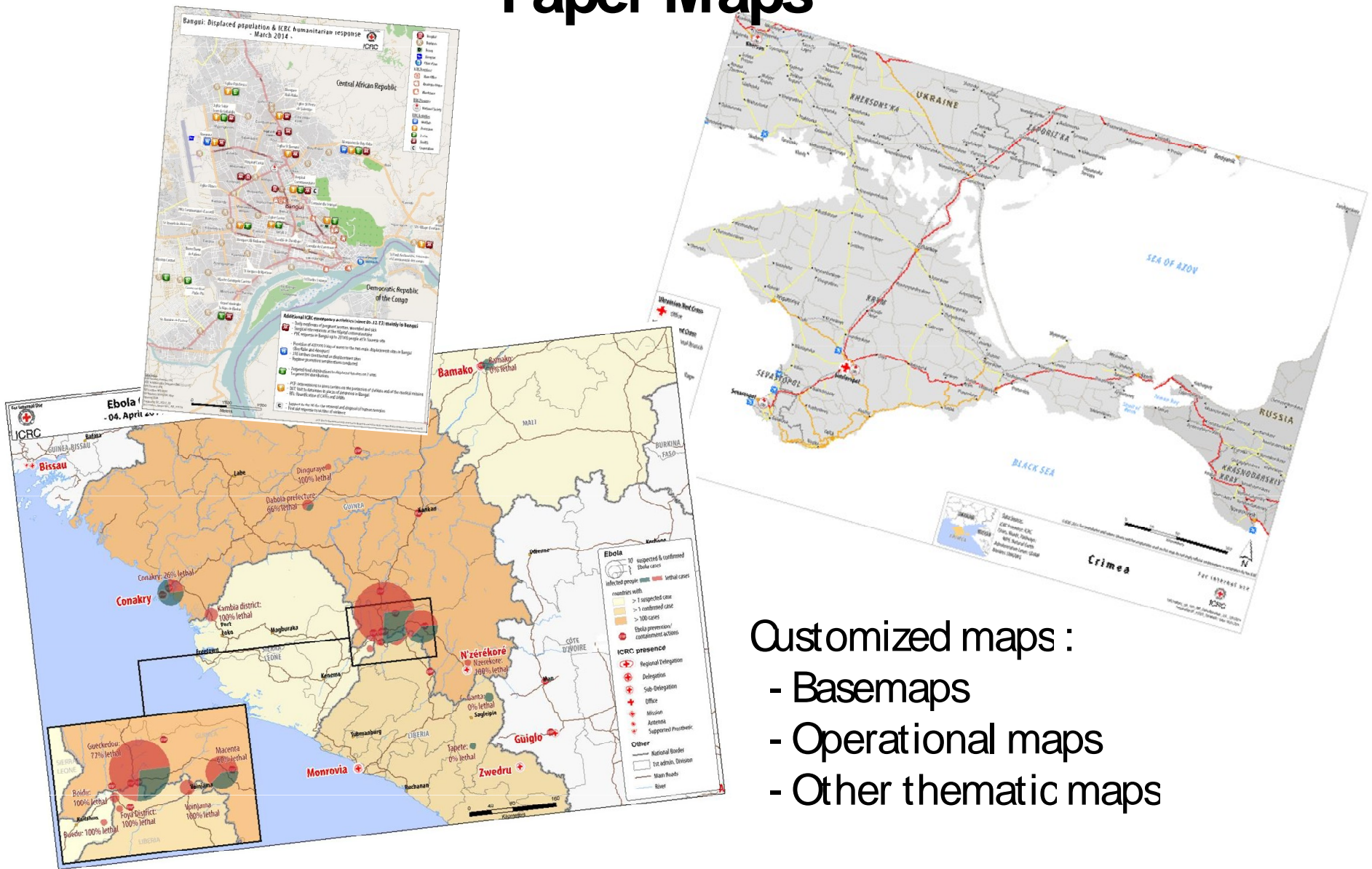
GIS and mapping services provided

- Production of maps (Paper, Geoportal, thematic Geoportal...)
- Advise units on how to put their data on maps
- Maintain the ICRC Geo-referential Data (country, borders, admin01, sites, premises, recipients places, projects)
- Providing GIS supported structural assistance to water authorities and, planned for 2015, to detention authorities

Transversality: managing geographic reference data for other databases systems



Paper Maps

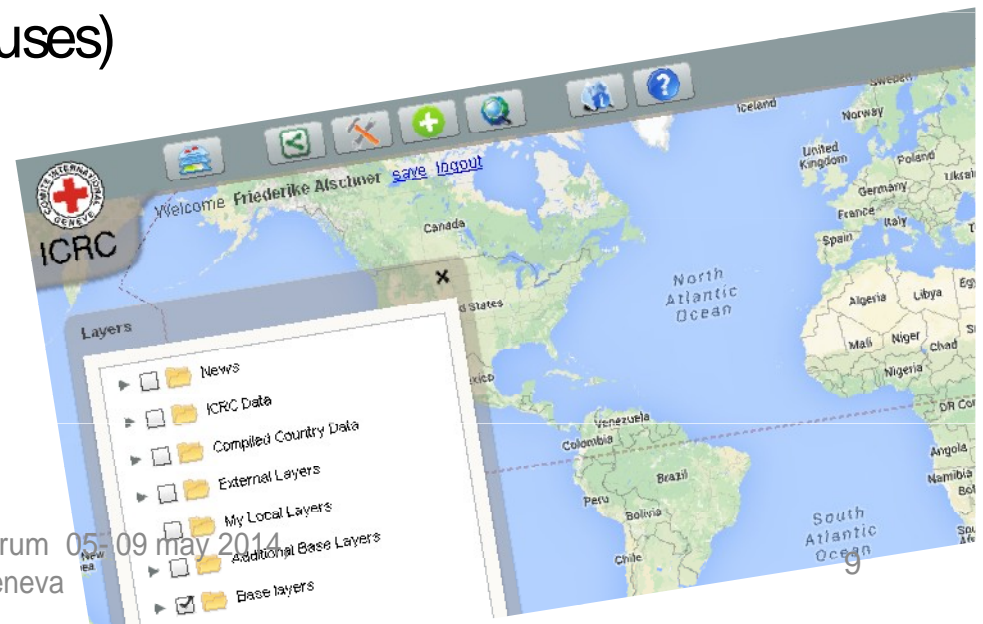


- Customized maps :
- Basemaps
 - Operational maps
 - Other thematic maps

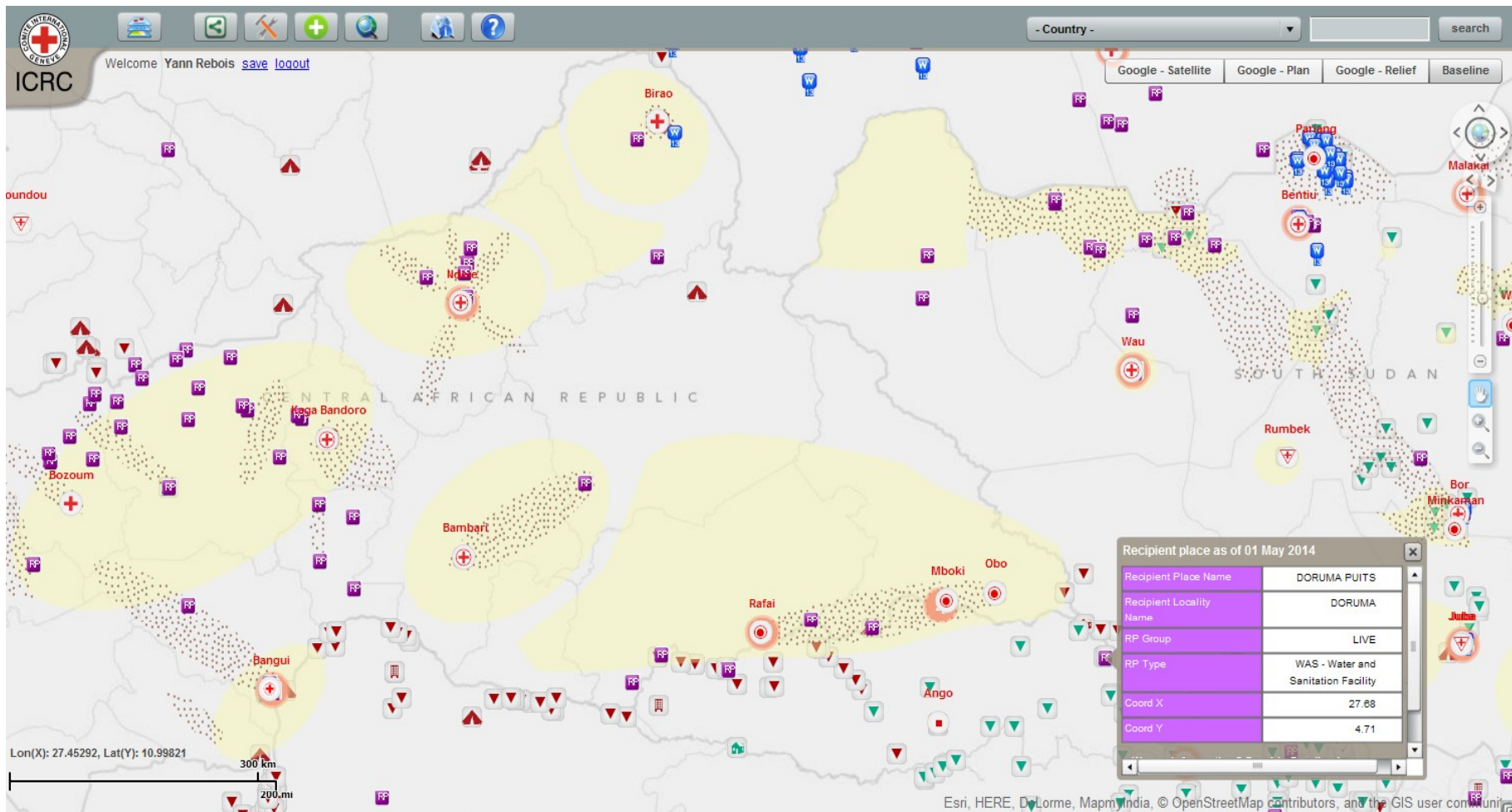
Geoportal

a merge of all humanitarian layers of interest in one space for an operation pictures

- ICRC presence / National Society Presence
- ICRC operational areas and Priority areas, areas of responsibility
- ICRC Water and Habitat Projects
- ICRC «recipients places» where we deliver assistance and protection
- ICRC Human resources and Finance
- ICRC Logistics (premises, warehouses)
- Satellite Images
- Displaced Population
- Transport infrastructure



In a few clicks the operational picture is on the map



With the details needed

The screenshot shows the ICRC WPA WatHab Projects web application. The interface includes a top navigation bar with the ICRC logo, a welcome message for 'Yann Rebois', and a search bar. A map of a river area is displayed, with a popup window titled 'WPA WatHab Projects' showing details for a specific project. The popup contains a table with the following information:

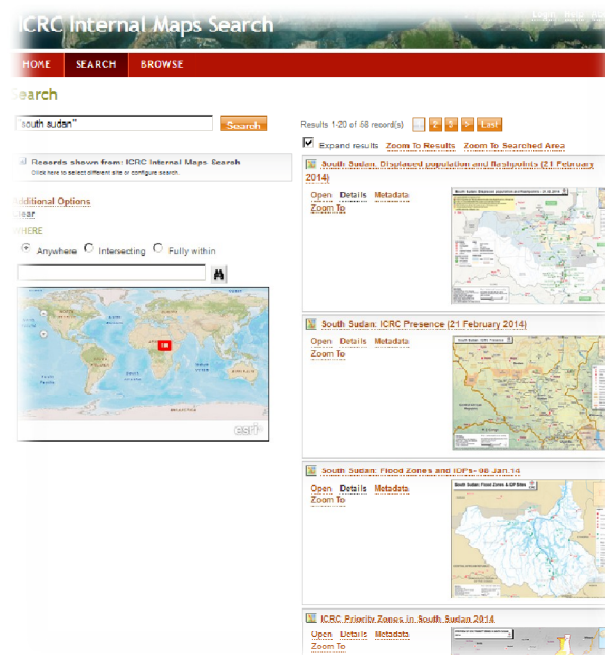
WPA WatHab Projects	
Title	Abyan Delta village flood protection measures and rehabilitation of irrigation system
Project Number	YE-ADE-ASSEN-13-1-0015
Location Name	Lakida Weir
Actual Start Date	11 May 2013
Actual End Date	17 February 2014

Below the table is a small photograph of the project site, showing a concrete weir structure. The map interface also includes a bottom left corner with a Bing logo and coordinates (Lon(X): 43.29833, Lat(Y): 13.1659), and a bottom right corner with a small inset map showing the project location within a larger region.

Map - Archive

Finding a map and geographical content?
Maps off the shelf on 24h/24...7/7 ?

- Paper maps
- Geoportal Layer



User profile joining the ICRC Geo



Water and Habitat
Engineer



Logisticians



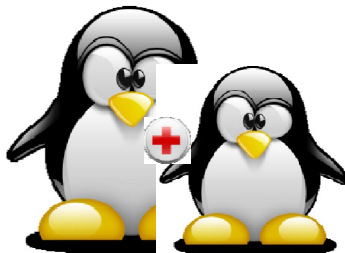
Finances



Protection/Detention



Health



Human Ressources



'NRBC'



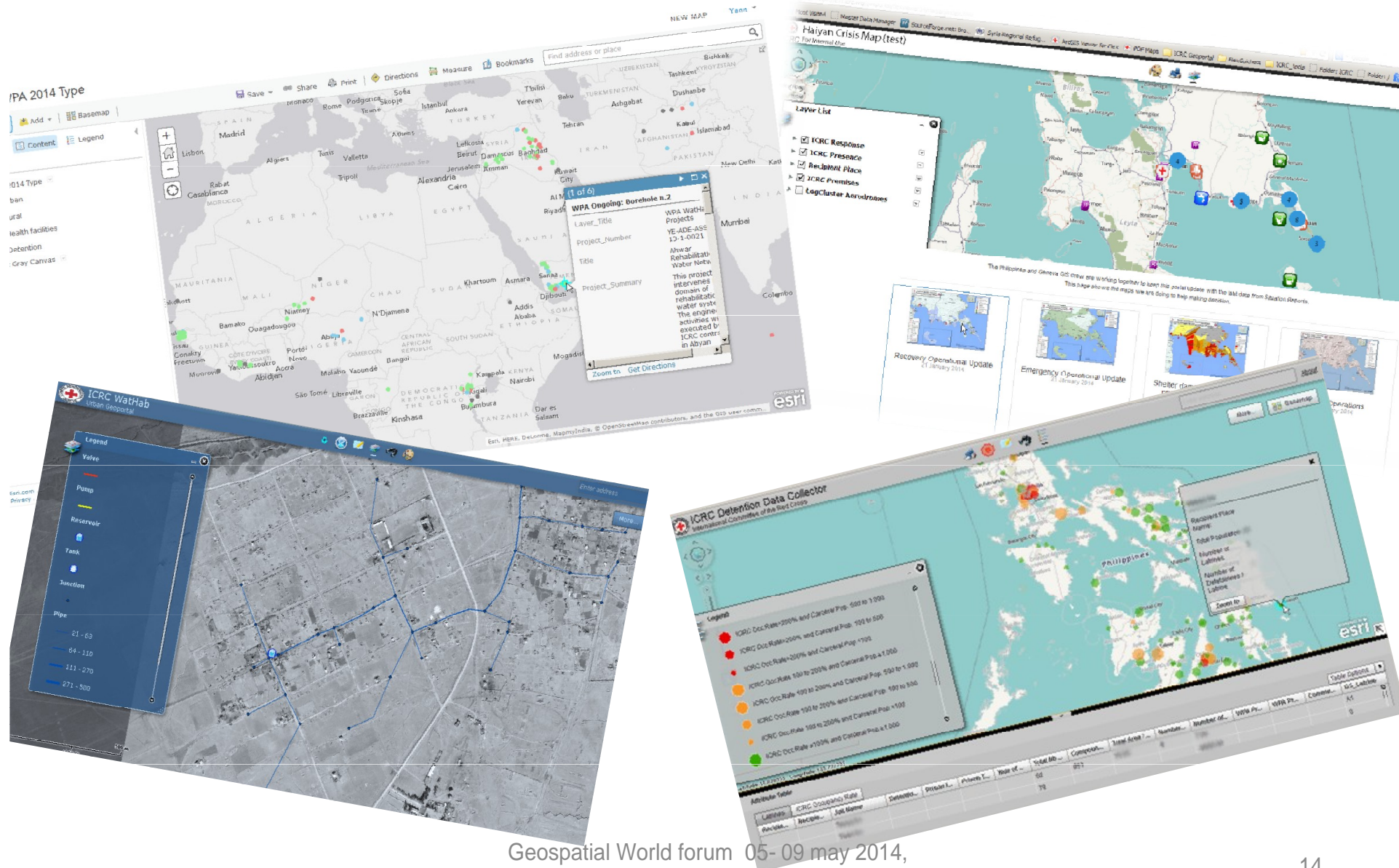
Juristic Conflict Definition

Geospatial World forum 05- 09 may 2014,
Geneva



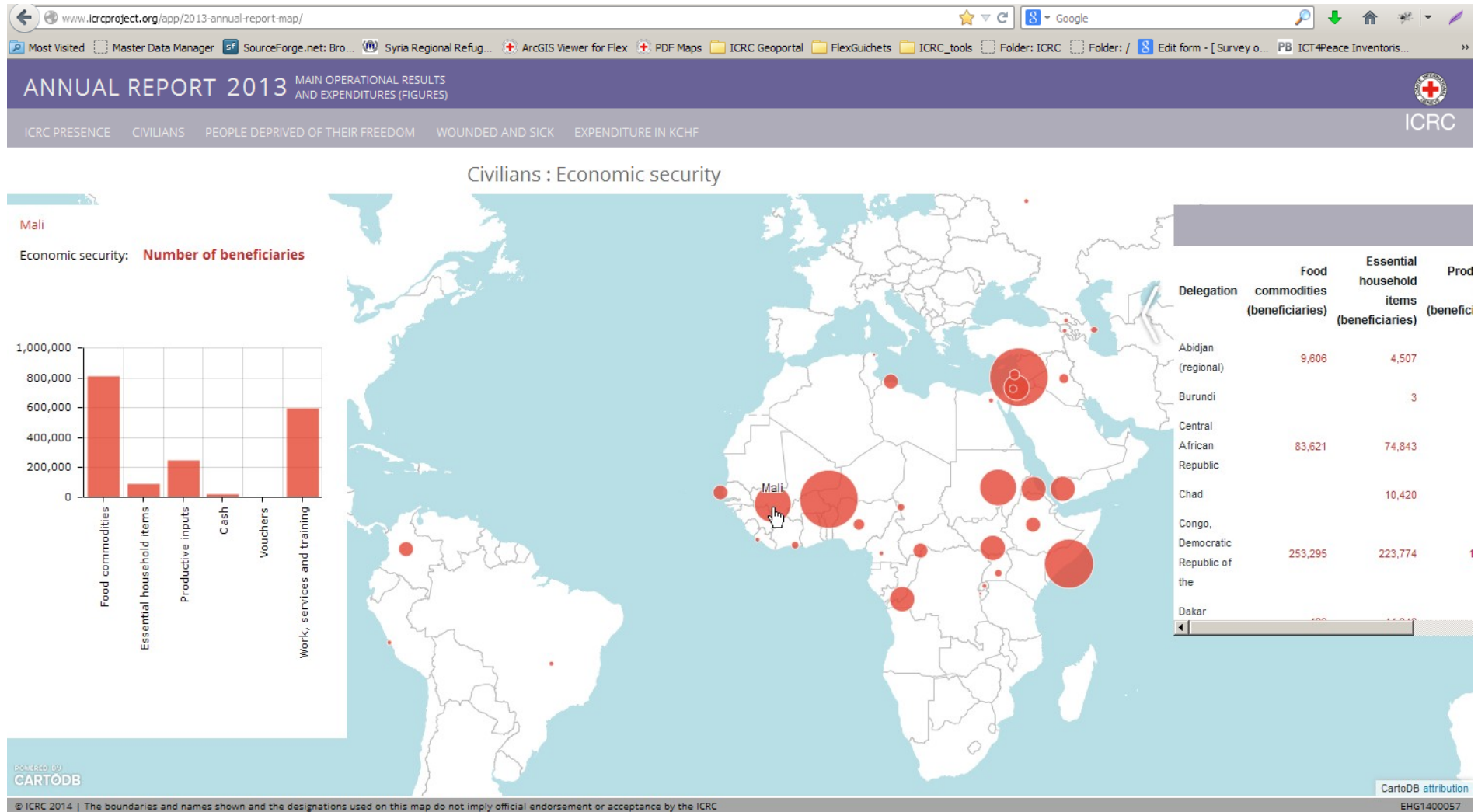
Operation
Some region

Thematic Geonortals



Geospatial World forum 05- 09 may 2014,
Geneva

Reporting Geoportal



<http://www.icrcproject.org/app/2013-annual-report-map/>

Thematic Geoportals

- Urban Water Geoportal
- Detention Data Geoportal
- Premises Management
- Emergency Mapfolio
(based on the American Red Cross..)

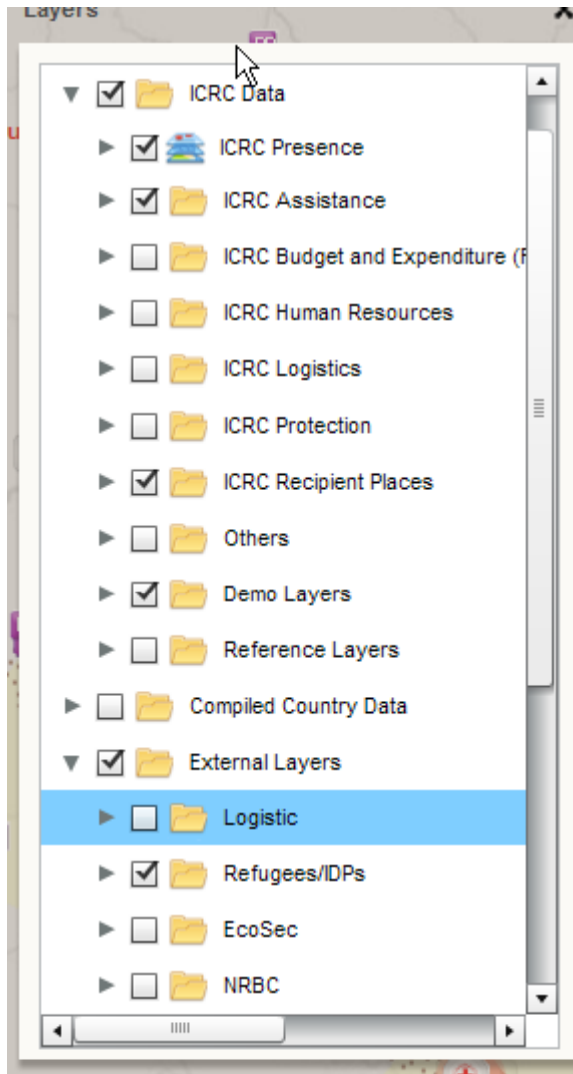
Geoportal vs. Thematic Geoportal

- Same ArcGISserver consumed in various applications
- For an internal use and ICRC staff member access

Geoportal	Thematic Geoportal
Main ICRC geographic information in one portal	Different applications focussing on specific topics
Accessible to everyone internally	Dedicated to specific user groups
Variety/ abundance of layers	Few layers easy to browse
Good for operational picture	...

⇒ They complement each other

Challenges



- Users and access
- Abundance of layers
- On-going layers
- Fragmented data for the global picture
- Sensitivity of data vs. making data accessible to anyone

Partners

ESRI ecosystem for a better aggregation from
the field to the HQ



Development of web applications, based on ESRI
technology with our counterpart Arxit



Where to go ?

- Consolidating and aggregating the data on time remains a challenge.
- Integrating maps in BI application.
- Going slowly to open data and being able to share where the ICRC is working for a better reporting and transparency ?